

THIS INSTRUMENT PREPARED BY
DAVID P. LINDLEY
OF
CAULFIELD and WHEELER, INC.
SURVEYORS - ENGINEERS - PLANNERS
7301-A WEST PALMETTO PARK ROAD, SUITE 100A
BOCA RATON, FLORIDA 33433 - (561)392-1991
APRIL - 2004

OAKS AT BOCA RATON PLAT EIGHT

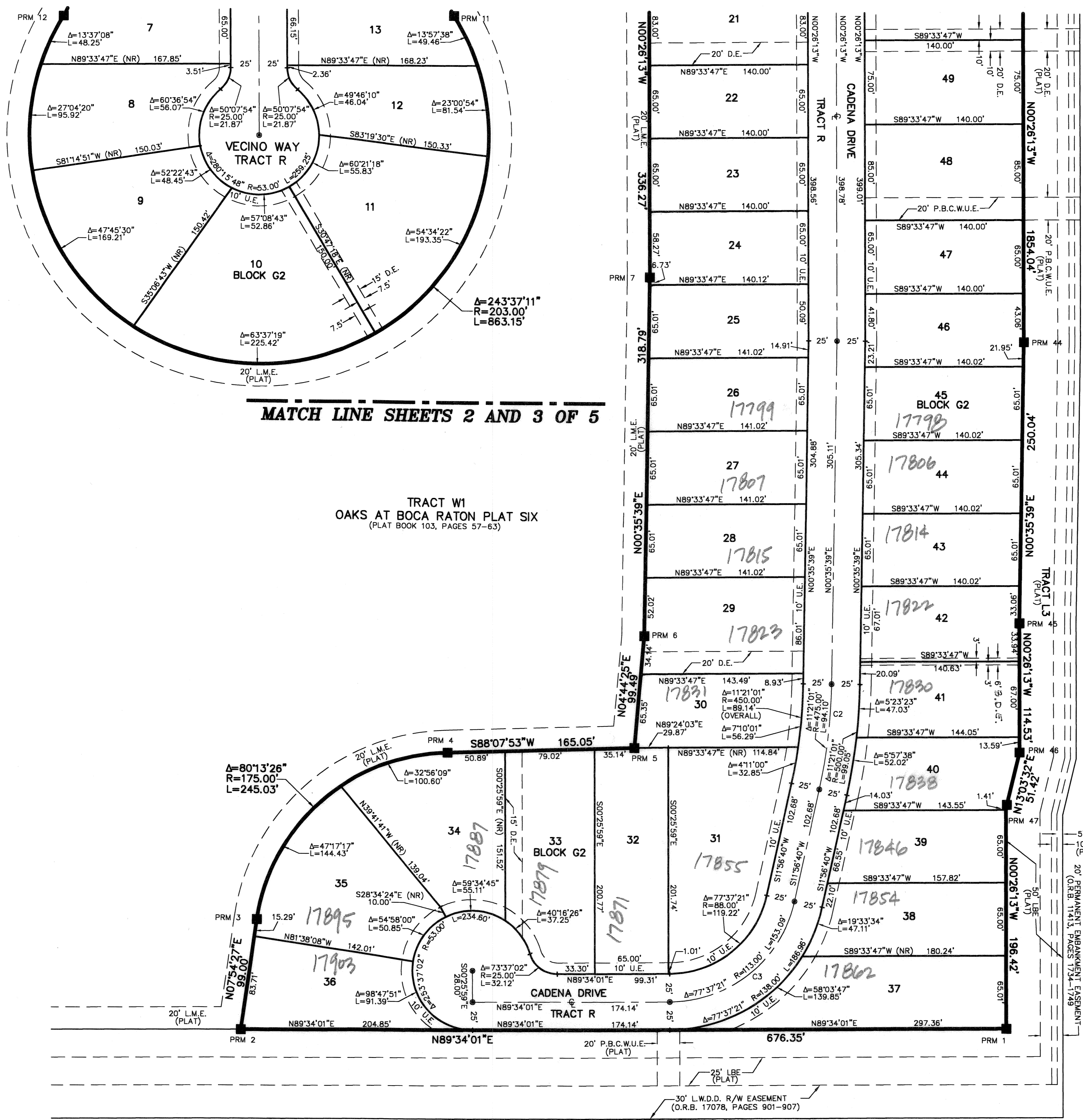
A PLANNED UNIT DEVELOPMENT BEING A PART OF RAINBOW PUD
BEING A REPLAT OF TRACTS F, S, G2 AND L2, OAKS AT BOCA RATON PLAT SIX,
AS RECORDED IN PLAT BOOK 103, PAGES 57 THROUGH 63 OF THE PUBLIC RECORDS OF PALM BEACH COUNTY, FLORIDA
LYING IN SECTION 31, TOWNSHIP 46 SOUTH, RANGE 42 EAST, PALM BEACH COUNTY, FLORIDA

119

STATE OF FLORIDA
COUNTY OF PALM BEACH
THIS PLAT WAS FILED FOR
RECORD AT _____ M.
THIS _____ DAY OF _____
A.D. 2004 AND DULY RECORDED
IN PLAT BOOK _____ ON
PAGES _____ AND _____
DOROTHY H. WILKEN
CLERK CIRCUIT COURT
BY: _____
DEPUTY CLERK

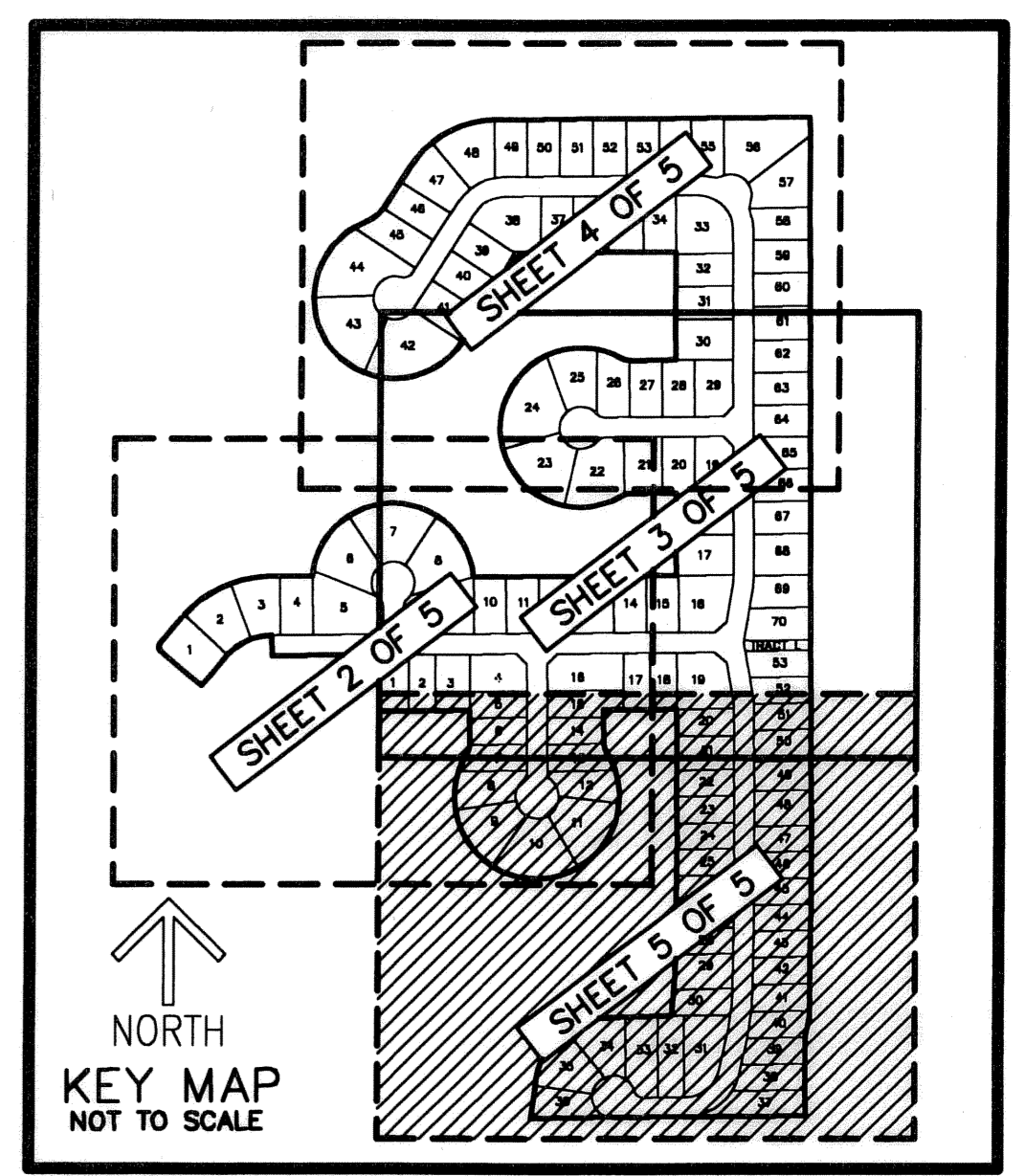
SHEET 5 OF 5

TRACT W1
OAKS AT BOCA RATON PLAT SIX
PAGES 57-63

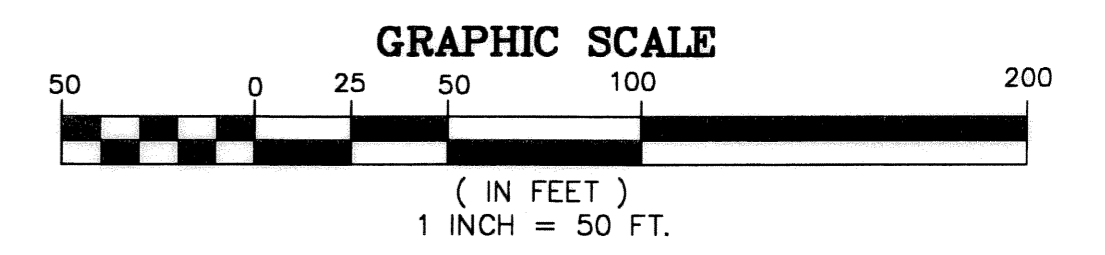


MATCH LINE SHEETS 2 AND 3 OF 5

TRACT W1
OAKS AT BOCA RATON PLAT SIX
(PLAT BOOK 103, PAGES 57-63)



NORTH
KEY MAP
NOT TO SCALE



CURVE TABLE

| CURVE NO. | CHORD BEARING | CHORD DISTANCE |
|-----------|---------------|----------------|
| C1 | S05°26'13"E | 19.70' |
| C2 | S06°16'10"W | 93.94' |
| C3 | S50°45'20"W | 141.65' |
| C4 | N04°33'47"E | 19.70' |
| C5 | N45°26'06"W | 159.80' |
| C6 | S61°02'00"W | 107.95' |

NOTES COORDINATES, BEARINGS AND DISTANCES

COORDINATES SHOWN ARE GRID
DATUM = NAD 83 1990 ADJUSTMENT
ZONE = FLORIDA EAST
LINEAR UNIT = US SURVEY FEET
COORDINATE SYSTEM 1983 STATE PLANE
TRANSVERSE MERCATOR PROJECTION
ALL DISTANCES ARE GROUND
SCALE FACTOR = 1.00002099
GROUND DISTANCE X SCALE FACTOR = GRID DISTANCE
BEARINGS AS SHOWN HEREON ARE GRID DATUM, NAD 83 1990
ADJUSTMENT, FLORIDA EAST ZONE.

SUBDIVISION Oaks at Boca Raton Plat 8
BOOK 103 PAGE 119
FLOOD MAP # 215 A
ZONING PUD
QUAD # 52
SE
TAX 860
PUD NAME Rainbow

L.W.D.D. CANAL L-40